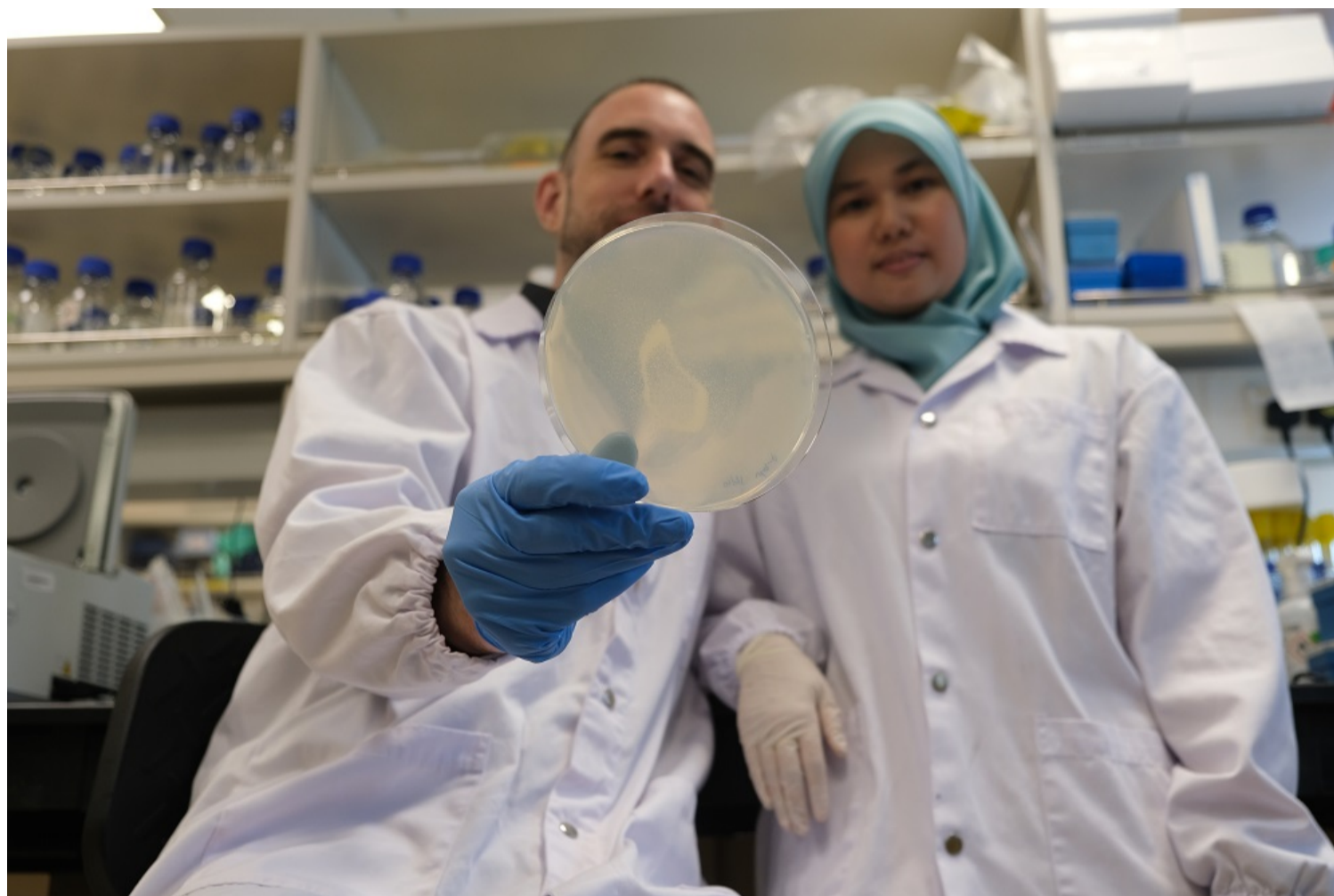


[Home](#) > [News](#) > [Stress response in cells key to slow down ageing: Study](#)

Published on 20 Oct 2022

# Stress response in cells key to slow down ageing: Study



NTU Singapore scientists have found that a stress response in cells, when 'switched on' at a post-reproductive age, could be the key to slow down ageing and promote longevity.

In lab experiments on a type of roundworm that shares similarities with humans, the NTU Singapore team found that switching on this stress response in aged worms by feeding them a high-glucose diet extended their lifespan as compared to worms fed a normal diet.

This is the first time a link between this stress response and ageing has been uncovered, said the NTU team of their findings published on 19 October in *Nature Communications*.

While further studies are needed to gain a deeper understanding of this link, the scientists said determining cellular pathways that underpin the ageing process open the door to the development of therapies that could delay the onset or even tackle age-related disorders such as cancer, dementia, and stroke.

## Related Topics

[Research](#)
[Health Sciences & Medicine](#)

## Related media releases

[Manipulating stress response in cells could help slow down ageing, finds NTU Singapore study.](#) 



## Related stories



**Addressing the loss of culture caused by climate change**

Published on 21 Jul 2023



**Chip that quantifies air pollutants accurately**

Published on 19 Jul 2023



**Geothermal energy potential found in Singapore**

Published on 18 Jul 2023



**It's time to do something about the extent of climate change: Opinion**

Published on 14 Jul 2023

## Media coverage

[qq.com, 30 Oct](#)



[Borneo Bulletin, 26 Oct](#)



[The Straits Times, page A16, 25 Oct](#)

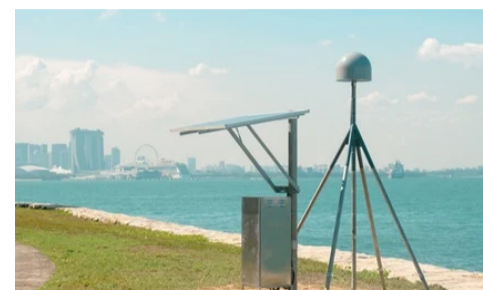


Show all



### Repurposing cancer drug for aggressive cancers

Published on 10 Jul 2023



### Satellite tech tracks changes in land height and sea levels

Published on 10 Jul 2023

TO TOP

Nanyang Technological University  
50 Nanyang Avenue,  
Singapore 639798  
Tel: (65) 67911744

Novena Campus  
11 Mandalay Road,  
Singapore 308232  
Tel: (65) 65138572

### Get in touch

[Visiting NTU](#)

[Careers](#)

[A-Z Directory](#)

[Contact Us](#)

### Quick links

[中文](#)

[NTU Library](#)

[Suppliers](#)

[Staff Intranet](#)

[Student Intranet](#)

### Connect with us



©2023 Nanyang Technological University  
[Copyright](#) | [Disclaimer](#) | [Privacy Statement](#) | [Volunteer Policy](#) | [Whistleblowing](#)